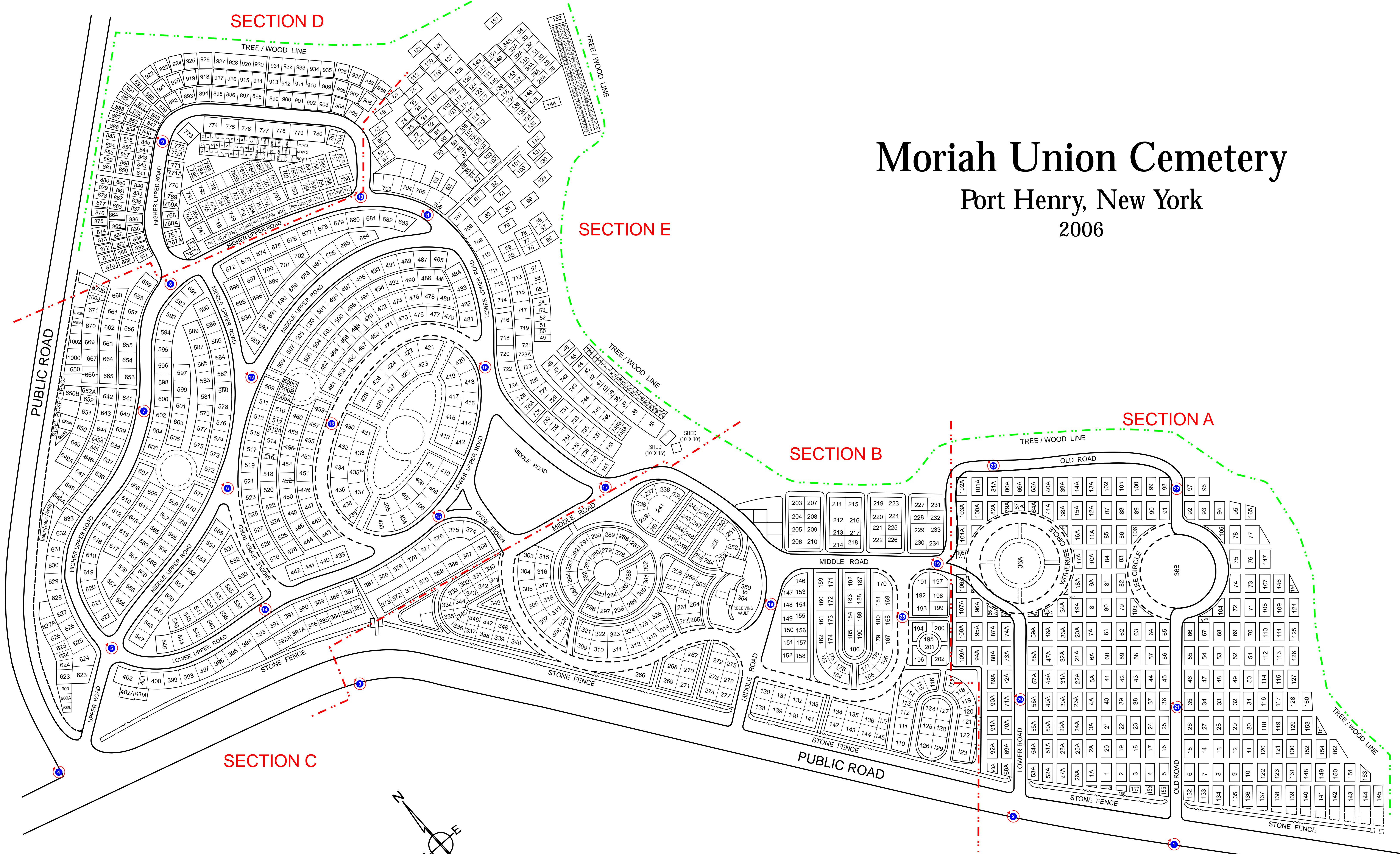


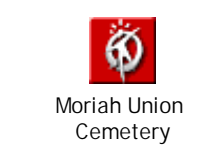
Moriah Union Cemetery

Port Henry, New York

2006



- - - Wood-Tree Line
- Road Boundary
- Walkway & Path Boundary
- Video Panorama



Moriah / Union Cemetery

OVERVIEW

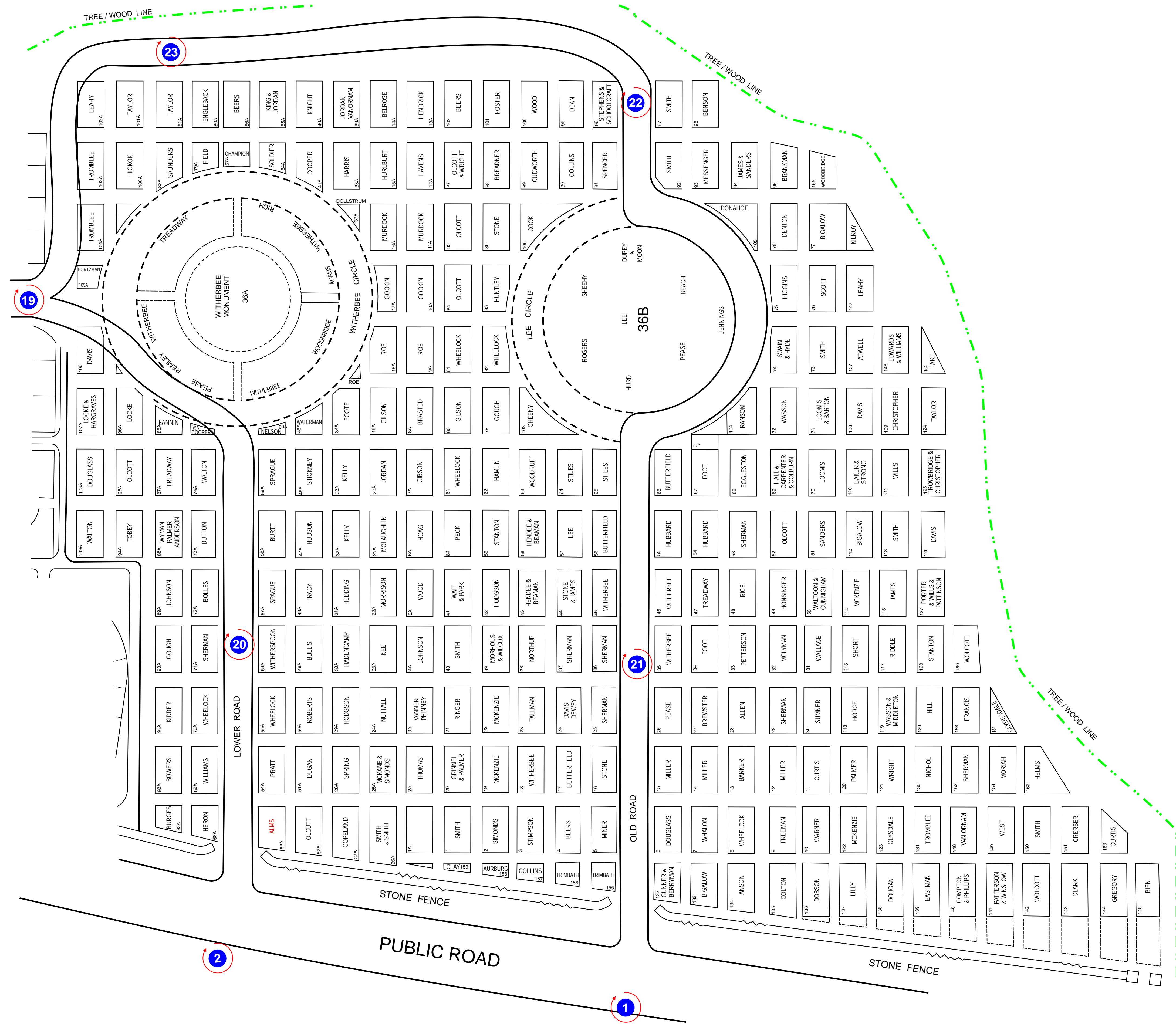
NOTE: The scale, grave location and measurements shown are for general reference use only. This is not a site surveyed document.

Scale 1"= 50'

Sheet 1 of 6

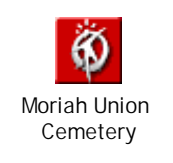
Disclaimer: The contained on this map is based on documents and information supplied by the client. Accuracy of images is not suitable for engineering purposes. topoGraphix assumes no responsibility for it's content.

Copyright © 2006 by topoGraphix.com



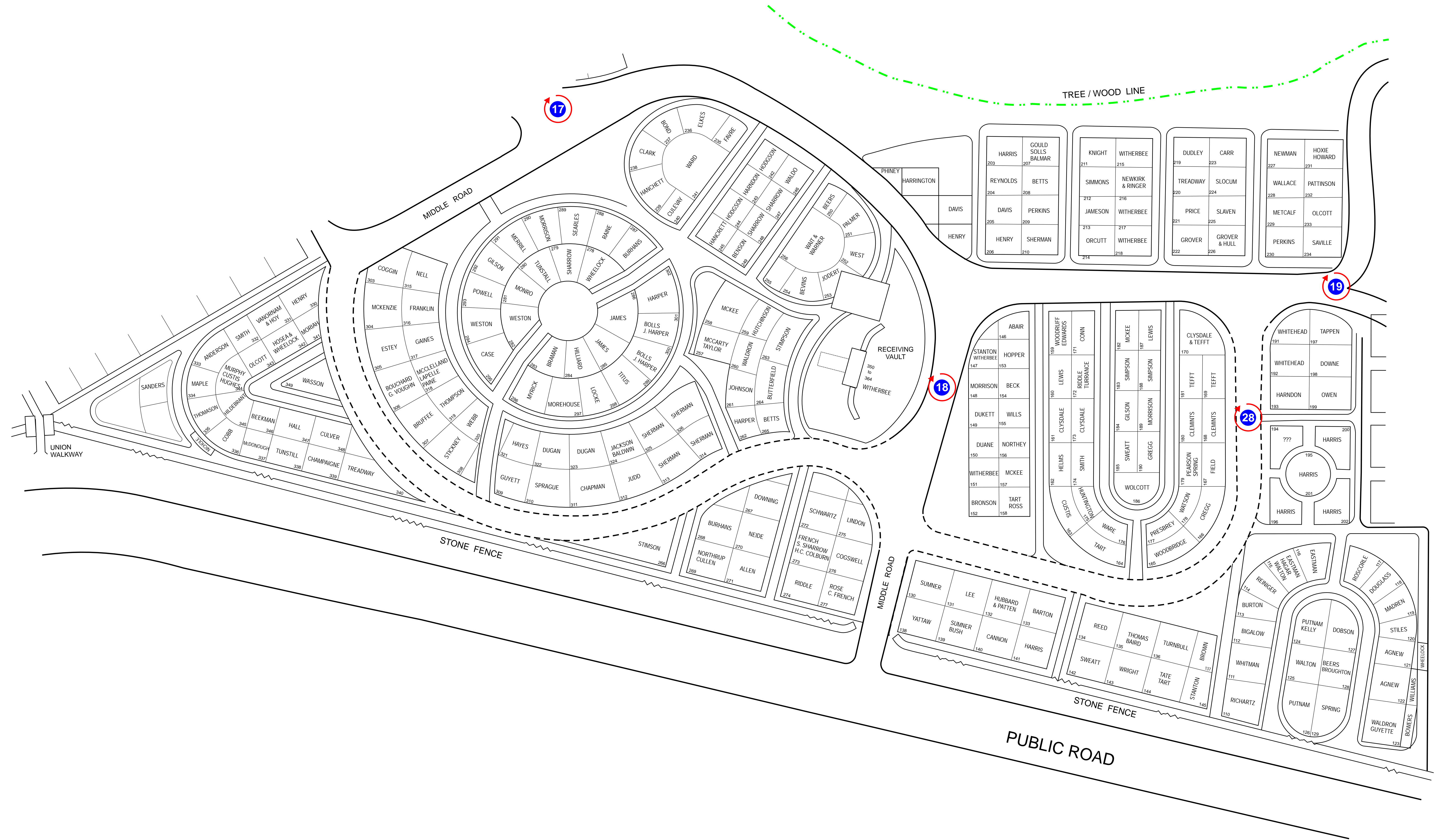
SECTION A

- - - - - Wood-Tree Line
- Road Boundary
- Walkway & Path Boundary
- 23 Video Panorama



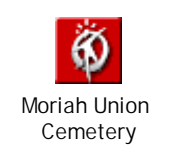
Disclaimer: The contained on this map is based on documents and information supplied by the client. Accuracy of images is not suitable for engineering purposes. topoGraphix assumes no responsibility for it's content.

Moriah / Union Cemetery	
SECTION A	
NOTE: The scale, grave location and measurements shown are for general reference use only. This is not a site surveyed document.	Scale 1"= 25'
Sheet 2 of 6	
Copyright © 2006 by topoGraphix.com	



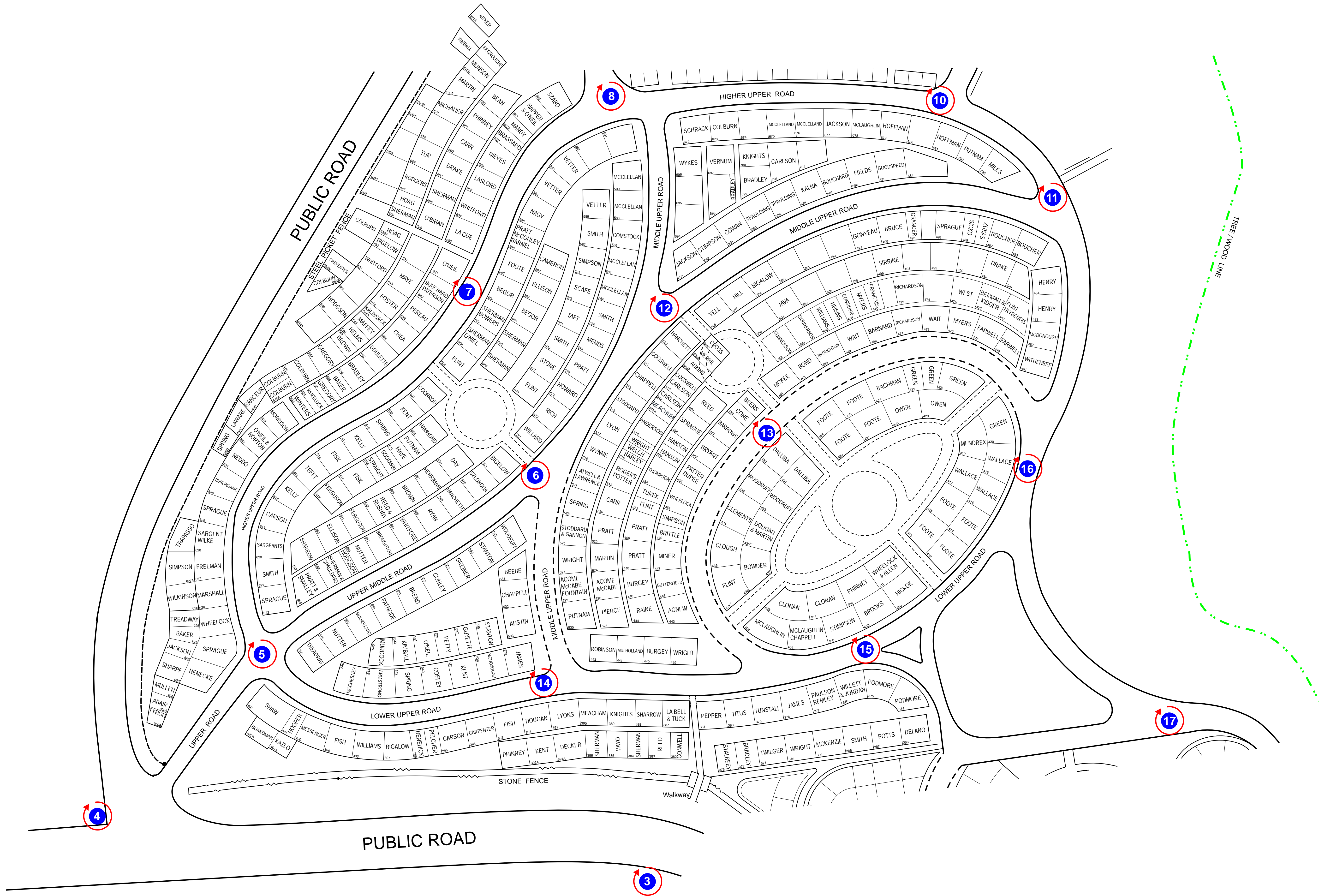
SECTION B

- - - - - Wood-Tree Line
- Road Boundary
- Walkway & Path Boundary
- 17 Video Panorama



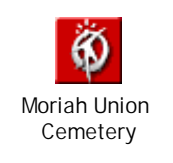
Disclaimer: The contained on this map is based on documents and information supplied by the client. Accuracy of images is not suitable for engineering purposes. topoGraphix assumes no responsibility for it's content.

Moriah / Union Cemetery	
SECTION B	
NOTE: The scale, grave location and measurements shown are for general reference use only. This is not a site surveyed document.	Scale 1"= 25'
Sheet 3 of 6	
Copyright © 2006 by topoGraphix.com	



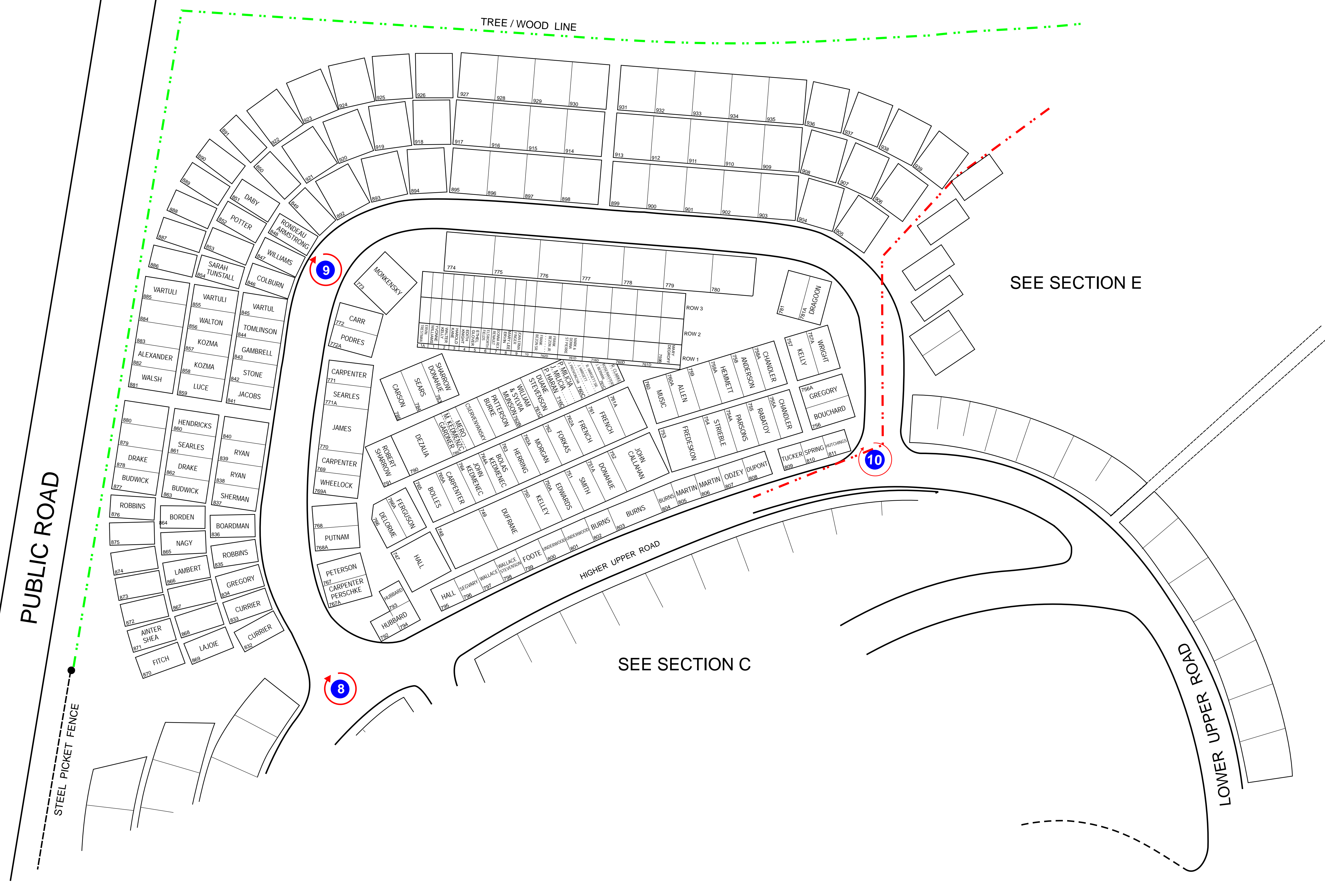
SECTION C

- - - - - Wood-Tree Line
- Road Boundary
- Walkway & Path Boundary
- 16 Video Panorama



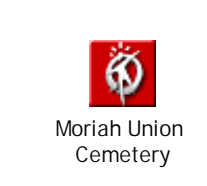
Disclaimer: The contained on this map is based on documents and information supplied by the client. Accuracy of images is not suitable for engineering purposes. topoGraphix assumes no responsibility for it's content.

Moriah / Union Cemetery	
SECTION C	
NOTE: The scale, grave location and measurements shown are for general reference use only. This is not a site surveyed document.	Scale 1"= 25'
Sheet 4 of 6	
Copyright © 2006 by topoGraphix.com	



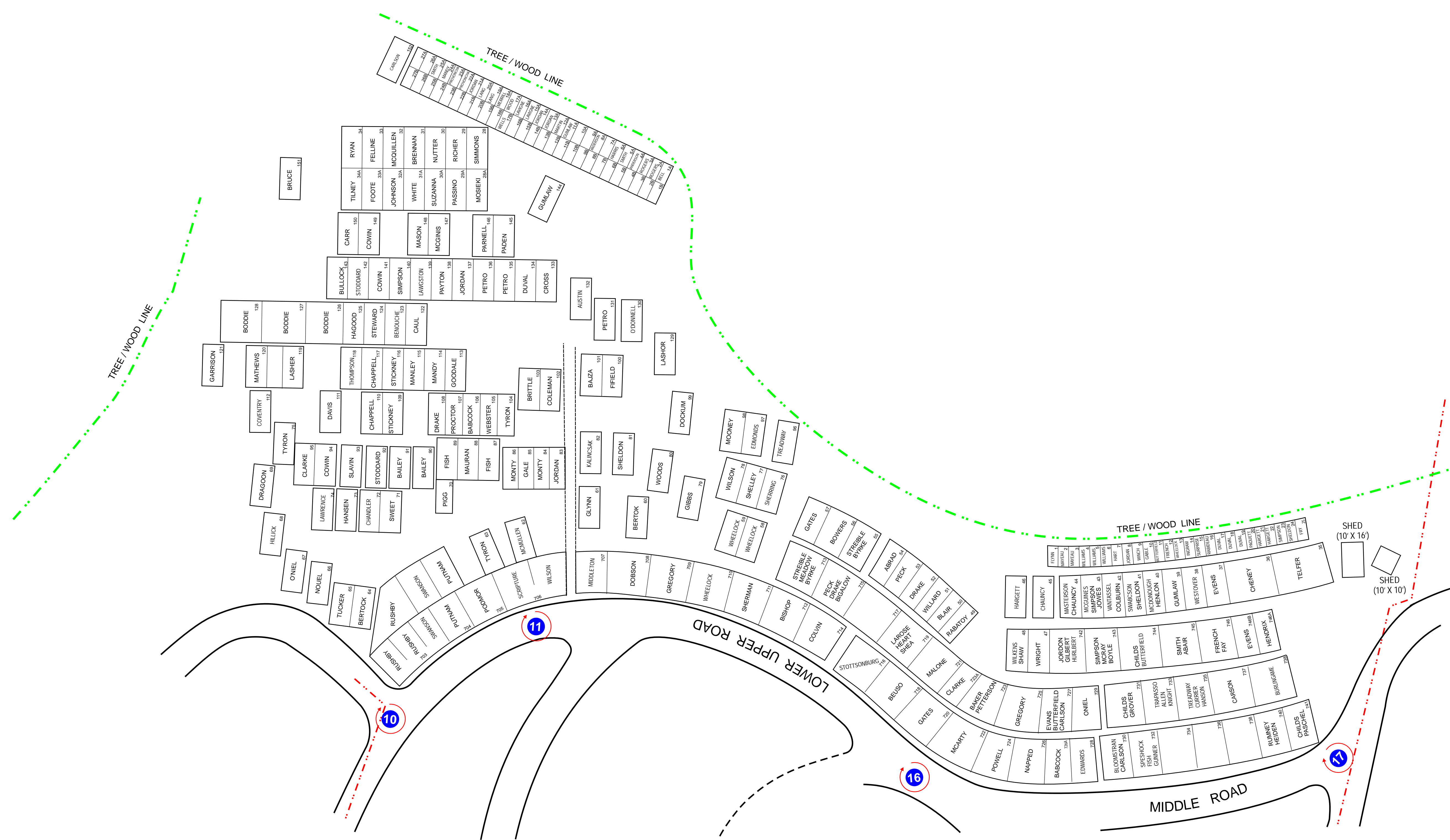
SECTION D

- · - · - · Wood-Tree Line
- Road Boundary
- Walkway & Path Boundary
- Video Panorama



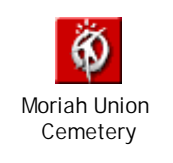
Disclaimer: The contained on this map is based on documents and information supplied by the client. Accuracy of images is not suitable for engineering purposes. topoGraphix assumes no responsibility for it's content.

Moriah / Union Cemetery	
SECTION D	
NOTE: The scale, grave location and measurements shown are for general reference use only. This is not a site surveyed document.	Scale 1"= 25'
Sheet 5 of 6	
Copyright © 2006 by topoGraphix.com	



SECTION E

- - - - - Wood-Tree Line
- Road Boundary
- Walkway & Path Boundary
- 10 Video Panorama



Disclaimer: The contained on this map is based on documents and information supplied by the client. Accuracy of images is not suitable for engineering purposes. topoGraphix assumes no responsibility for it's content.

Moriah / Union Cemetery	
SECTION E	
NOTE: The scale, grave location and measurements shown are for general reference use only. This is not a site surveyed document.	Scale 1"= 25'
Sheet 6 of 6	
Copyright © 2006 by topoGraphix.com	