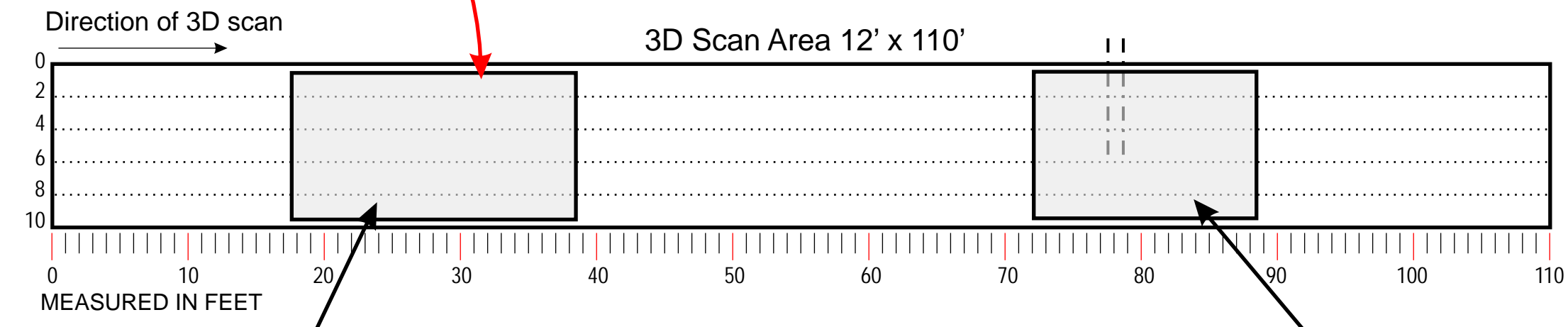


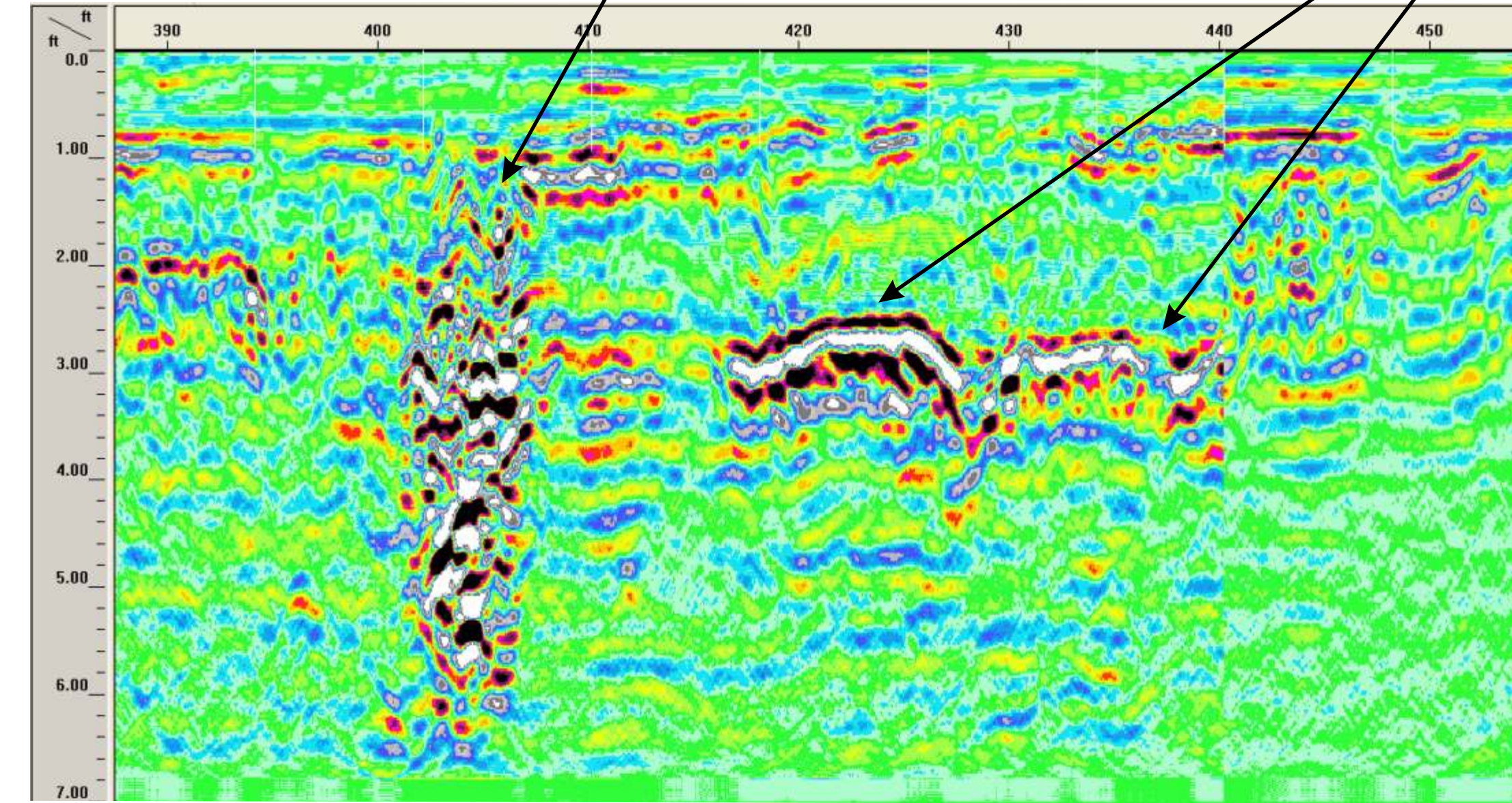
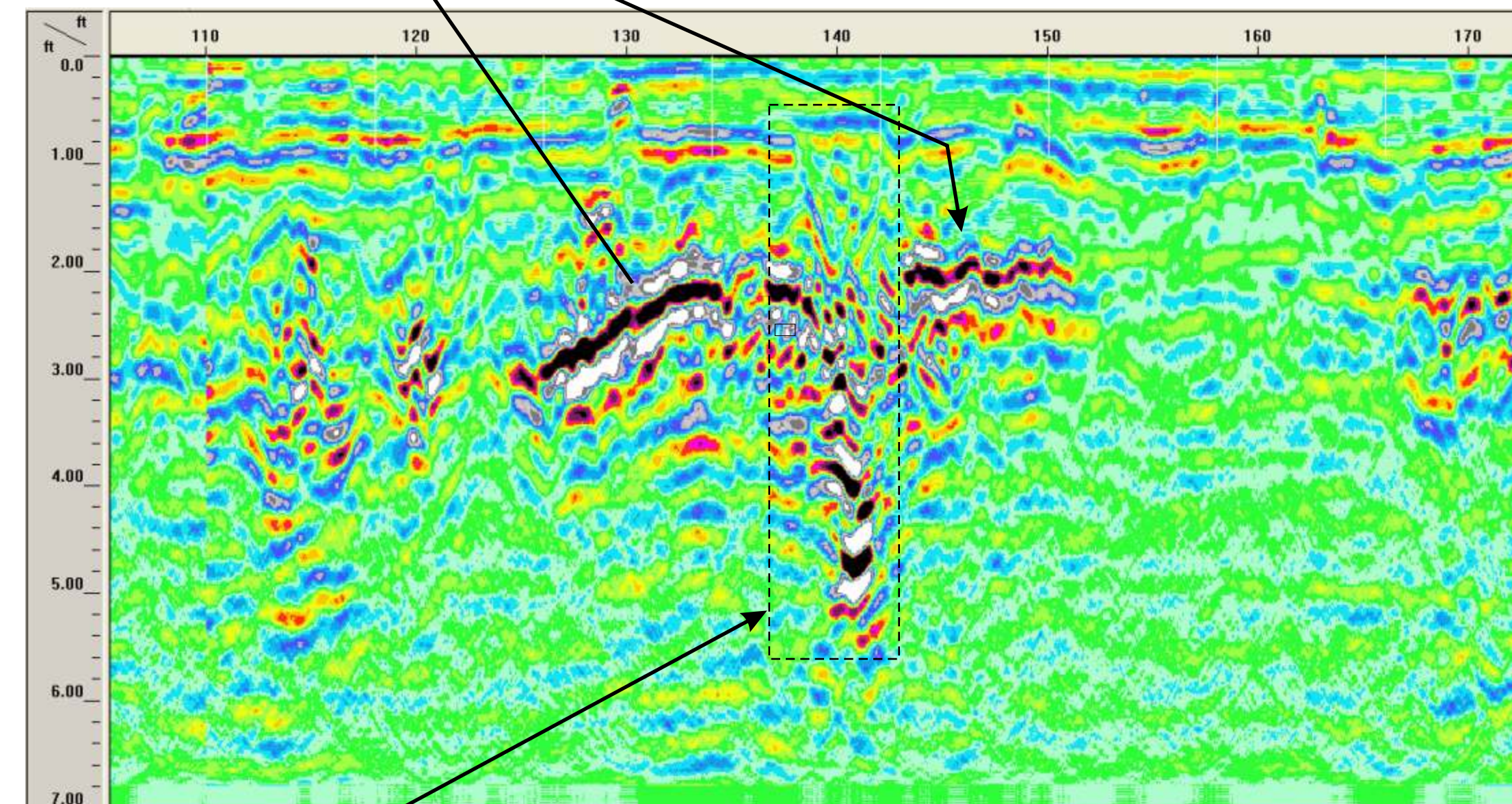
ANOMALIE OF POSSIBLE DRAINAGE LINES - LOCATION SHOWN AS REFERENCE ONLY. NOT SUITABLE FOR ENGINEERING PURPOSES.



AREA SHOWS EVIDENCE OF TRENCH THAT'S APPROXIMATELY 4 FT. WIDE STARTING AT THE 1 FT. LEVEL

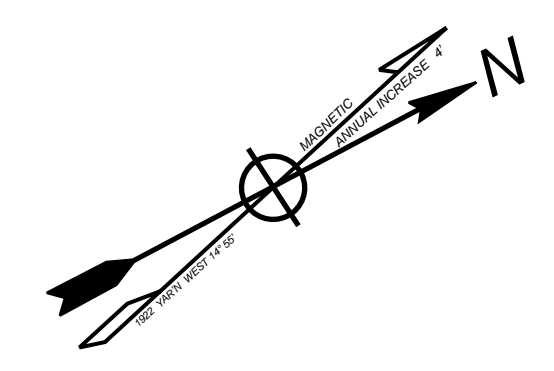
ANOMALY SHOWING GROUND DISTURBANCE APPROXIMATELY 24 FT. X 10 FT. AT THE 2 FT. LEVEL

ANOMALY SHOWING GROUND DISTURBANCE APPROXIMATELY 22 FT. X 10 FT. AT THE 3 FT. LEVEL



AREA SHOWS EVIDENCE OF TRENCH THAT'S APPROXIMATELY 1.6 FT. WIDE STARTING AT THE 1 FT. LEVEL

IMAGES SHOW 2 DISTURBED GROUND AREAS - HIGH PROBABILITY OF A MASS BURIAL SITE



- Tree line ————
- Grid marks ————
- Grid scan line ————
- Possible drain Line ————
- Anomaly ⊗

Disclaimer: The contents of this map is based on documents and information supplied by the client. Accuracy of images is not suitable for engineering purposes. TOPOGRAPHIX® assumes no responsibility for it's content.

CATHOLIC CEMETERY	
GPR AREA SCAN	
NOTE: The scale, grave location and measurements shown are for general reference use only. This is not a site surveyed document.	Scale 1"= 20'
Sheet 1 of	
Copyright © 2009 by TOPOGRAPHIX®	